

# Safety Information

## Important Safety Information

This owner's guide includes information for Regulatory Model(s): ADB-N2.

### SAVE THESE INSTRUCTIONS

**⚠ WARNING:** When using an electrical appliance, basic precautions should always be followed, including the following:












### READ ALL INSTRUCTIONS BEFORE USE

**⚠ WARNING:** To reduce the risk of injury or damage, read and follow the safety precautions when setting up, using, and maintaining your robot.

This appliance can be used by children aged 8 years and above and persons with reduced physical, sensory, or mental capabilities, or lack of experience and knowledge, if they have been given supervision or instruction concerning the use of the appliance in a safe way and understand the hazards involved. Children must not play with the appliance. Cleaning and user maintenance must not be carried out by children without supervision.

**⚠ WARNING:** Cancer and Reproductive Harm – [www.P65Warnings.ca.gov/product](http://www.P65Warnings.ca.gov/product)

**⚠** This is the safety alert symbol. It is used to alert you to potential physical injury hazards. Obey all safety messages that follow this symbol to avoid possible injury or death.

 Risk of electric shock	 Class II equipment	 Rated power output, DC	 Read operator's manual	 General symbol for recycling
 Risk of fire	 For indoor use only	 Rated power input, DC	 Keep out of reach of children	<b>BFP</b> Backfeed Protection
 Separate Supply Unit	 Rated power input, AC			

**WARNING:** Indicates a hazardous situation that, if not avoided, could result in death or serious injury.

**CAUTION:** Indicates a hazardous situation that, if not avoided, could result in minor or moderate injury.

**NOTICE:** Indicates a hazardous situation that, if not avoided, could result in property damage.

#### GENERAL



## WARNING



- This product is not a toy. Small children and pets should be supervised when the product is operating.
- Do not sit or stand on this product.
- This product comes with a region approved power supply cord and is designed to be plugged in to a standard household AC power outlet only. Do not use any other power supply cord. For replacement cords, please contact Customer Care to ensure the correct country-specific power supply cord is supplied.
- Do not disassemble or open the dirt disposal unless instructed to do so. There are no user serviceable parts inside. Refer servicing to qualified service personnel.
- Risk of electric shock, use indoors in dry locations only.
- Do not handle this product with wet hands.
- Store and operate this product in room temperature environments only.

#### AUTOMATIC DIRT DISPOSAL



## WARNING



- To reduce the risk of electric shock, unplug your dirt disposal before cleaning it.

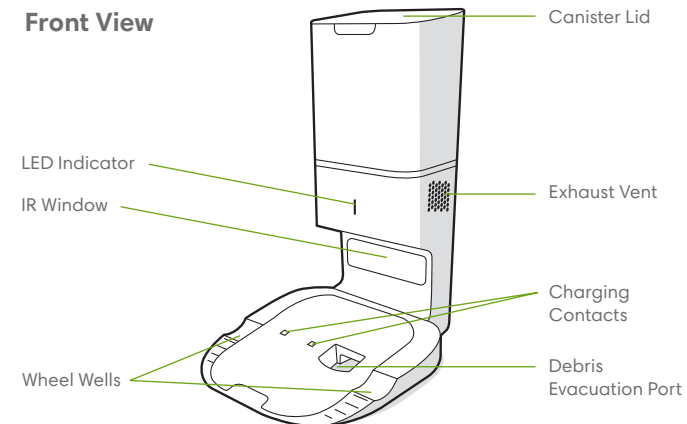
- Do not pour any liquids into the device and do not immerse it in water.
- Do not use outdoors or on wet surfaces.
- Do not allow the device to be used as a toy. Close attention is necessary when used by or near children.
- Use only as described in this manual.
- Do not use if the cord or plug is damaged. If the appliance is not working as it should, has been dropped, damaged, left outdoors, or dropped into water, return it to a service centre.
- Do not handle the plug or appliance with wet hands.
- Do not put any objects into the appliance's openings. Do not use with any openings blocked; keep them free of dust, lint, hair, and anything that may reduce air flow.
- In order to avoid a hazard due to inadvertent resetting of the thermal cut-out, this appliance must not be supplied through an external switching device, such as a timer, or connected to a circuit that is regularly switched on and off at the source.

## NOTICE

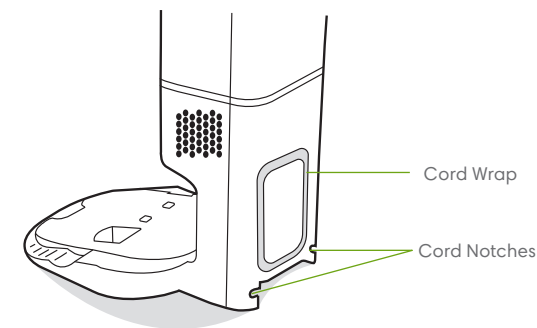
- Product may not be used with any type of power converter. Use of power converters will immediately void the warranty.
- If you live in an area prone to electrical storms, it is recommended that you use additional surge protection. Your dirt disposal may be protected with a surge protector in the event of severe electrical storms.
- Do not use without a dust bag and/or filters in place.
- To properly maintain your dirt disposal, do not place foreign objects inside it, and ensure it is clear of debris.
- Always disconnect your robot from the dirt disposal before cleaning or maintaining it.

# About Your Clean Base™ Automatic Dirt Disposal

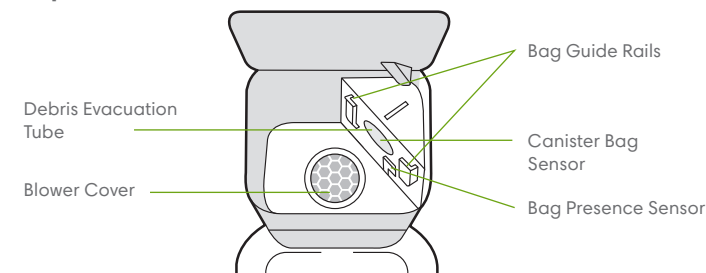
## Front View



## Back View

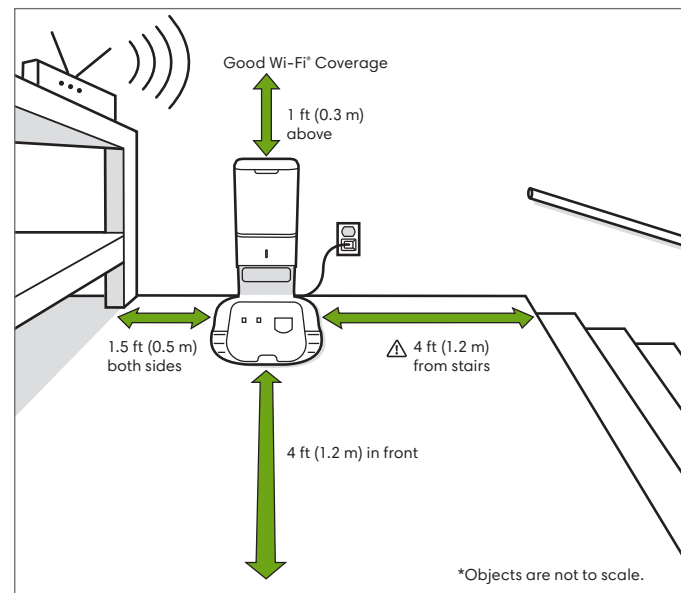


## Top View



# Using Your Automatic Dirt Disposal

## Positioning the Clean Base™ Automatic Dirt Disposal



**WARNING:** To prevent the risk of your robot falling downstairs, ensure that the charging station is placed at least 4 feet (1.2 metres) away from stairs.

## About Your Automatic Dirt Disposal

While cleaning, your robot will automatically return to the dirt disposal to empty its bin and recharge as needed.

The dirt disposal's LED indicator will turn solid red when a new bag is needed. If a clog is detected, the dirt disposal will trigger additional attempts to automatically clear the clog.

**Note:** If you place your robot on the dirt disposal by hand, it will not empty automatically. In this case, use the iRobot HOME App or the button on your robot and manually empty your robot's bin.

## Care and Maintenance

### Care and Maintenance Instructions

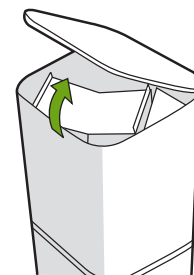
To keep your dirt disposal running at peak performance, follow these care procedures:

Dock Part	Care Frequency	Replacement frequency
Bags	-	Bags should be replaced when prompted by the LED indicator/app
Charging Contacts IR Window	Once every month	-
Blower Cover inside canister	Once every month (remove debris from blower cover)	-

**Note:** iRobot manufactures various replacement parts and assemblies. If you think you need a replacement part, please contact iRobot Customer Care for more information.

## Replacing the Bag

1 Lift up the canister lid to open.



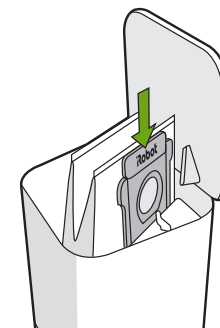
2 Pull up on the plastic card to remove the bag from the canister.

**Note:** This will seal the bag so dust and debris cannot escape.



3 Discard the used bag.

4 Install a new bag, sliding the plastic card into the guide rails.



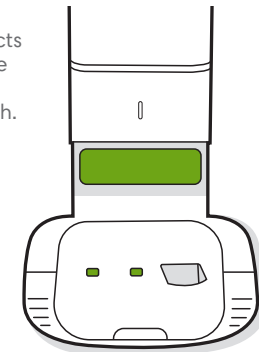
5 Press down on the lid making sure it is completely closed.

**Note:** To achieve optimal performance with your robot and automatic dirt disposal, clean and/or replace your robot's filter as needed.

## Cleaning the IR Window and Charging Contacts

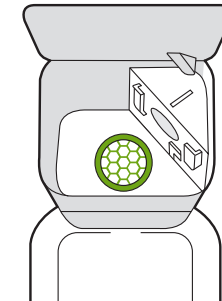
Inspect the sensors and charging contacts to make sure they are clear of debris. Wipe with a clean, dry cloth.

**Note:** Do not spray cleaning solution directly onto sensors or into sensor openings.




## Removing Debris from Blower Cover

Inspect blower cover for any lint or debris build-up, and wipe with a clean dry cloth to remove.



# Troubleshooting

Your dirt disposal will tell you if something is wrong via an LED indicator on the front of the canister and through the iRobot HOME App.

LED Indicator	Common Error	How to Fix
Solid Red	Bag full or missing	<ol style="list-style-type: none"> <li>1. Replace bag if it is full or missing.</li> <li>2. Make sure the bag is securely inserted.</li> <li>3. If the problem persists, remove any debris from the port on the bottom of your robot and the dirt disposal.</li> </ol>
Blinking Red	There is a leak or a clog in the dock evacuation path	<ol style="list-style-type: none"> <li>1. Make sure the canister lid is pushed down and firmly sealed. Tap the  button on your robot and manually empty the bin.</li> <li>2. Remove any debris from the port on the bottom of your robot and dirt disposal.</li> <li>3. Unplug the dirt disposal from the wall. Place it on its side and inspect the debris evacuation tube for debris. If necessary, remove the tube to clear any debris.</li> </ol>

# iRobot Customer Care

## USA & Canada

If you have questions or comments about your dirt disposal, please contact iRobot before contacting a retailer.

You can start by visiting [global.irobot.com](http://global.irobot.com) for support tips, frequently asked questions, and information about accessories. This information can also be found in the iRobot HOME App. If you need further assistance, call the US Customer Care team at **(877) 855-8593**.

### iRobot USA Customer Care Hours

- Monday to Friday, 9AM–9PM Eastern Time
- Saturday and Sunday 9AM–6PM Eastern Time

## Outside USA & Canada

Visit [global.irobot.com](http://global.irobot.com) to:

- Learn more about iRobot in your country
- Get hints and tips to improve your product performance
- Get answers to questions
- Contact your local support centre

# Regulatory Information

**CE** The iRobot Corporation hereby declares that this radio equipment device is in compliance with the EU Radio Equipment Directive 2014/53/EU and the RoHS Directive 2011/65/EU. The full text of the EU Declaration of Conformity is available at the following web address: [www.irobot.com/compliance](http://www.irobot.com/compliance).

This device incorporates the BYD Precision Manufacture Co., Ltd. Trident radio module model: AXC-Y1. Trident is a dual-band radio which operates in the WLAN 2.4 GHz and WLAN 5 GHz bands.

- The 2.4 GHz band is limited to operate between 2400 MHz –2483.5 MHz with a maximum EIRP output power of 18.48 dBm (70.47 mW) at 2412 MHz.
- The 5 GHz band is limited to operate between 5150 MHz and 5850 MHz with a maximum EIRP output power of 21.02 dBm (126.47 mW) at 5180 MHz.



This symbol on the product indicates that the appliance must not be disposed of with unsorted common municipal waste. As the end-user, it is your responsibility to dispose of the end-of-life appliance in an environmentally sensitive manner as follows:

- (1) returning it to the distributor/dealer from whom you purchased the product; or
- (2) depositing it in a designated collection point.

Disposing of this product correctly will help save valuable resources and prevent any potential negative effects on human health and the environment, which could otherwise arise from inappropriate waste handling. Please contact your local authority for further details or your nearest designated collection point. Penalties may be applicable for incorrect disposal of this waste, in accordance with your national legislation. More information may be found at the following source: [http://ec.europa.eu/environment/waste/wEEE/index\\_en.htm](http://ec.europa.eu/environment/waste/wEEE/index_en.htm)



©2019 iRobot Corporation, 8 Crosby Drive, Bedford, MA 01730 USA. All rights reserved.  
iRobot, Roomba, and Virtual Wall are registered trademarks of iRobot Corporation.  
HomeBase+ is a trademark of iRobot Corporation. Wi-Fi and the Wi-Fi logo are  
registered trademarks of Wi-Fi Alliance.